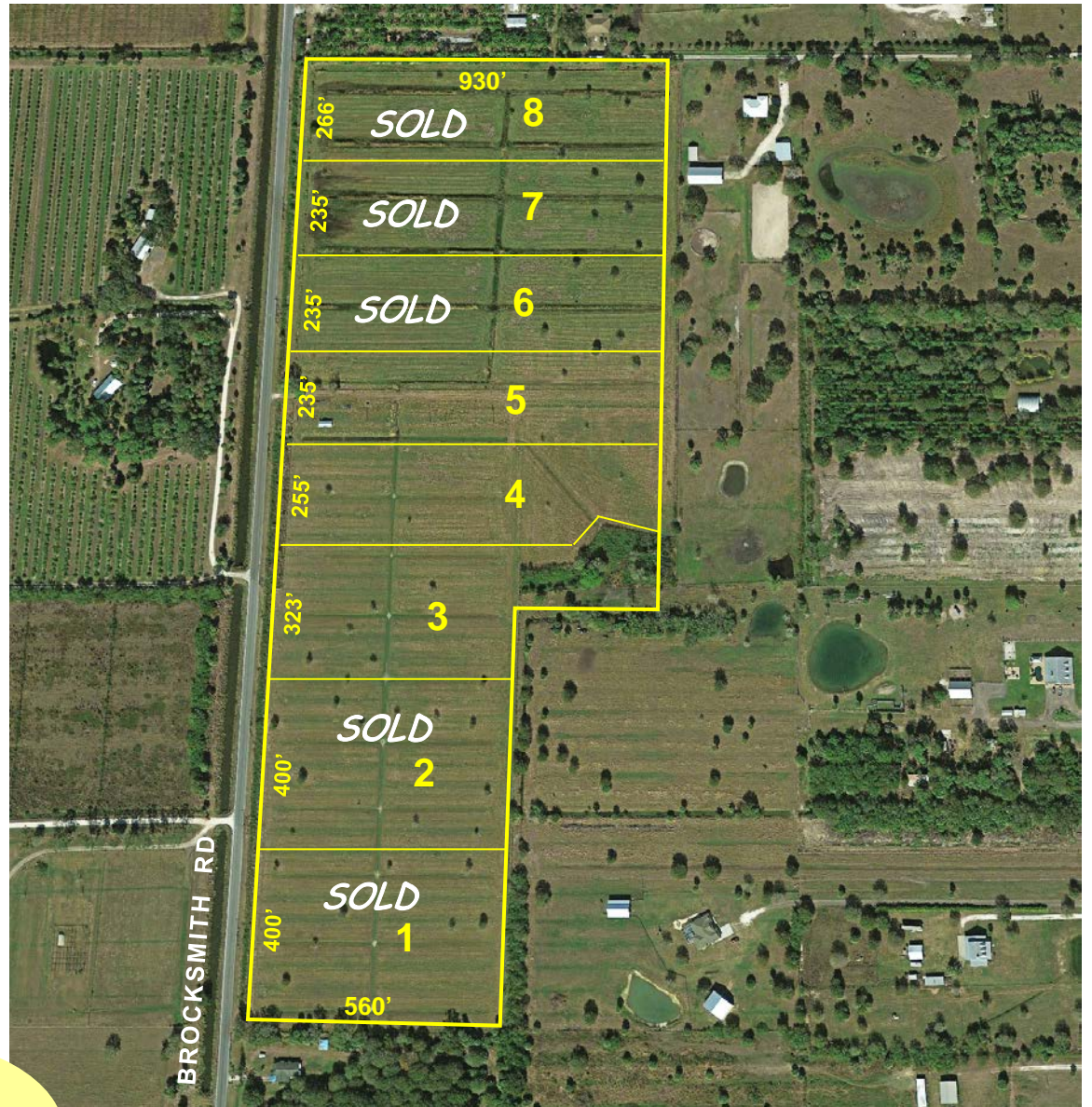


5+ac Lots Agricultural Land

South Brocksmith Road, St. Lucie County, Florida

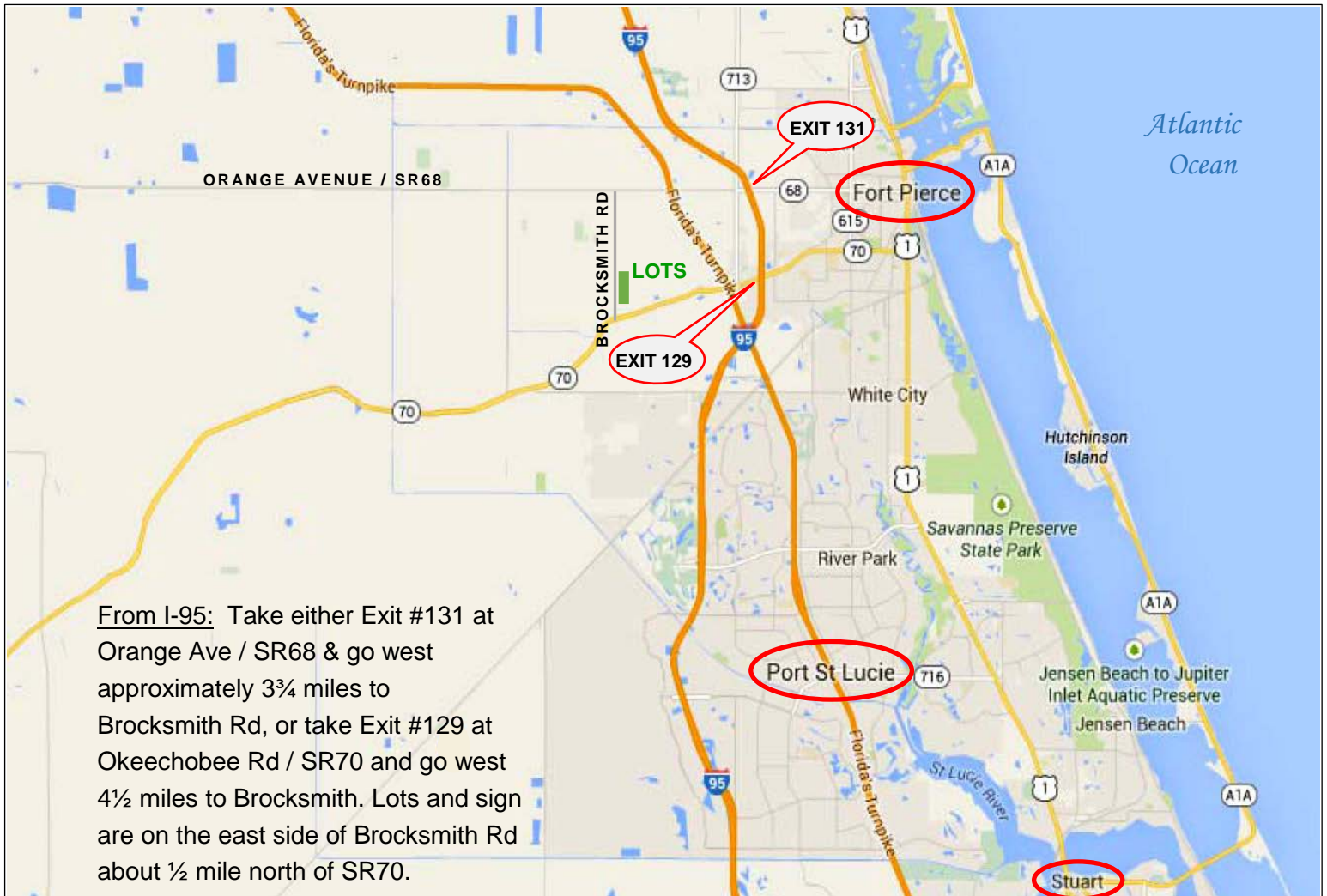
Lot 8 SOLD	5.55ac
Lot 7 SOLD	5.01ac
Lot 6 SOLD	5.01ac
Lot 5	5.01ac
Lot 4	5.22ac
Lot 3	5.31ac
Lot 2 SOLD	5.18ac
Lot 1 SOLD	5.16ac



**NO
Property Owners
Association
or Fees**

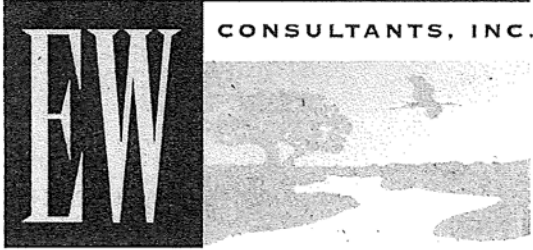
Most lots: \$130,000. each
Lot 5 with improvements: \$160,000.

- Partially Fenced Pasture with Paved Brocksmith Rd Frontage
- Culverted Entry, FPL Electric Service, and 2" Well on Lot 5
- Small Wetland at back of Lot 3
- Zoning: AG-5 Agricultural, 1 Dwelling Unit per 5ac
- Small Oak Trees scattered throughout
- Desirable location in an area of Ranchette Homesites
- Convenient, quick access to I-95 & FL Turnpike
- 0.4 mi North of Okeechobee Rd; 2.5 mi South of Orange Ave



EW Consultants, Inc.

Natural Resource Management, Wetland, and Environmental Permitting Services



DRAWDY/BROCKSMITH ROAD SUBDIVISION
LOT 3 PRESERVE AREA

PRESERVE AREA
MONITORING AND MAINTENANCE PLAN

PREPARED FOR:
Drawdy Properties, LLC

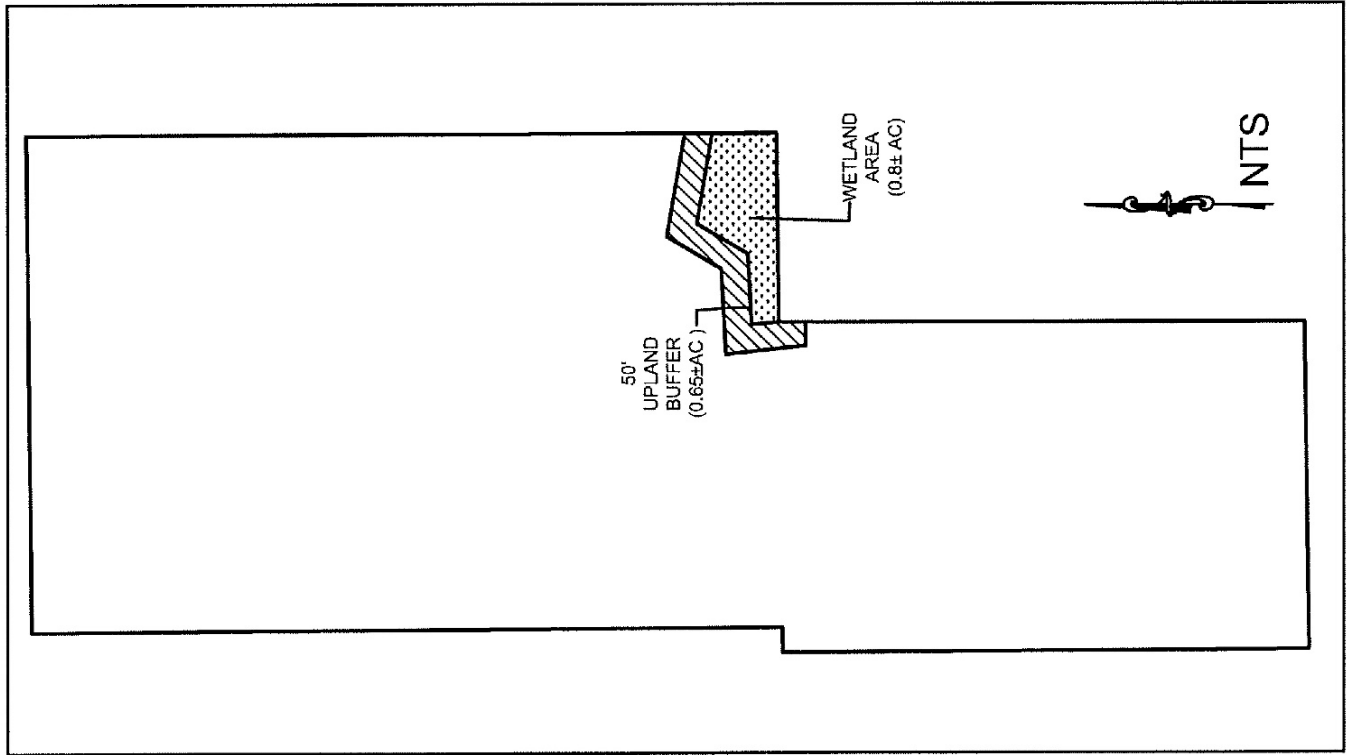
PREPARED BY:
EW Consultants, Inc.

This Recorded Document is available in its entirety online at
<https://www.stlucieclerk.com>, Official Records Book 4027, Page 2188

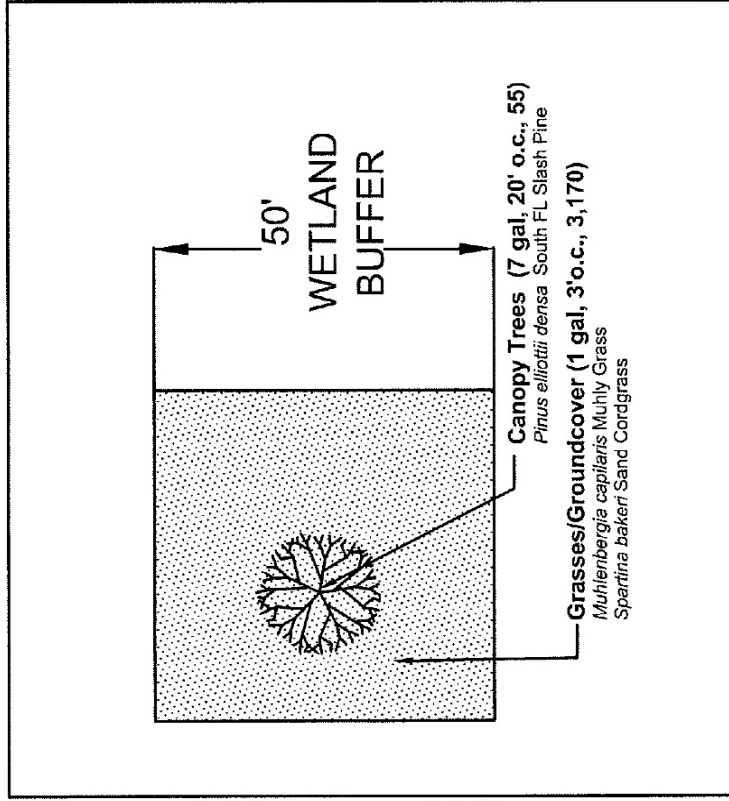
OR
via email from our office by request.

©September 2016

UPLAND BUFFER PLANTING AREA



WETLAND BUFFER RE-PLANTING PLAN



NOTE:
PLEASE SEE SITE
PLAN FOR DETAILED
LOT LAYOUT

BROCKSMITH SUBDIVISION
WETLAND BUFFER
RE-PLANTING PLAN

NOV 2016
FIGURE

CONSULTANTS, INC.
EW CONSULTANTS, INC.
1000 26th Avenue, Suite 200
St. Petersburg, FL 34706
772.387.4771 FAX: 772.387.2888
www.ewconsultants.com

Excerpt: page 7 of 7 total