

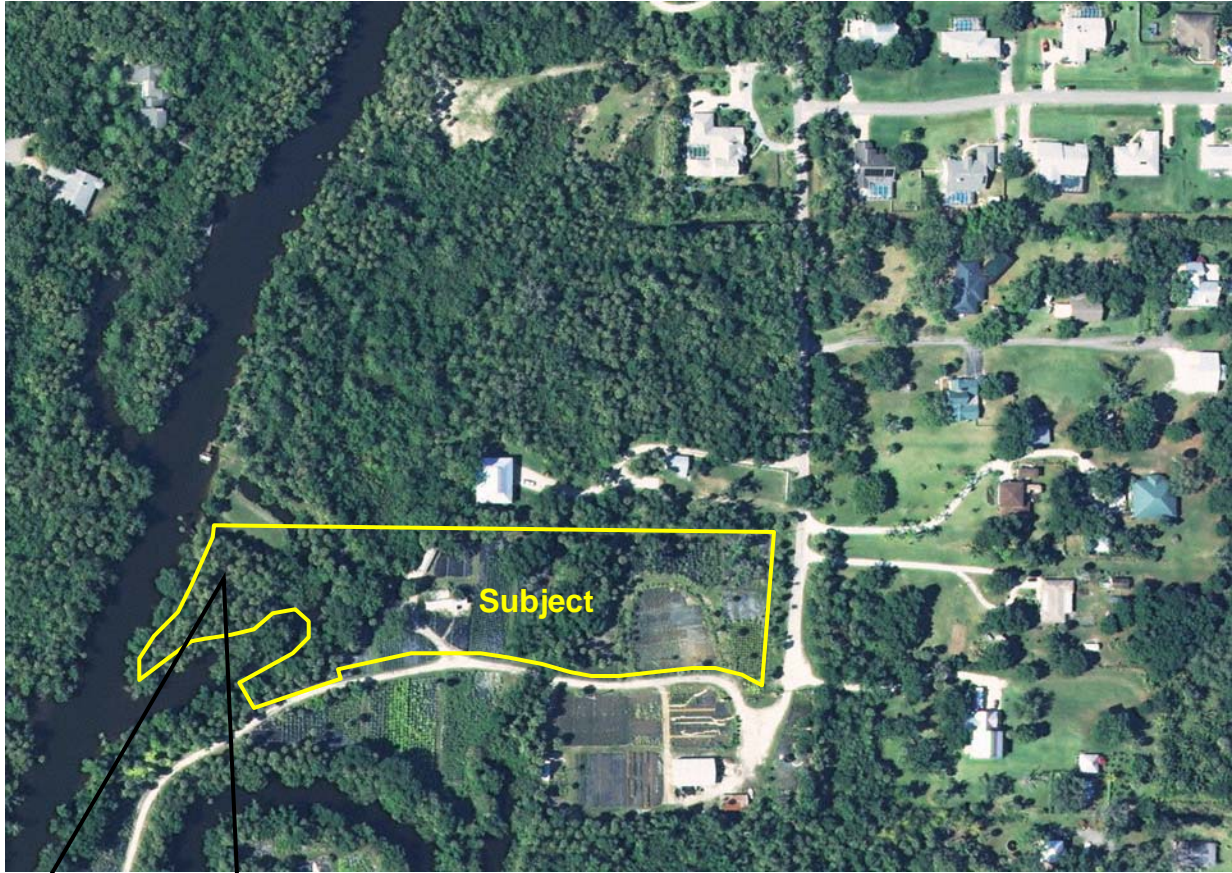
4.5 ac Waterfront Parcel

North Fork Saint Lucie River
White City, Saint Lucie County, FL



- 230ft Frontage on Palmetto Avenue; over 925ft Deep
- Waterfront Boundary includes a Private Island
- Mature native trees & vegetation surrounding vacant homesite
- St Lucie County RS-2 Zoning with FPL Electric Service in place
- Located at end of quiet road; surrounded by upscale homes
- Secluded, picturesque, peaceful setting... yet not remote
- PID #s: 3403-502-0110-0001 & 3403-502-0222-1000

\$ 250,000.



Private Island at west end of property

**A view of the river from
the island's north side.**





**Interior of the Island ~
mature palms & oaks
surrounded by a high riverbank.**



Directions to Site:

From I-95: Take Exit 126 / Midway Road and go E 2.5 miles to Sunrise Blvd; turn & go 1 Block S to W 1st Street; turn R and follow to corner at end; turn L onto Palmetto Ave and follow road to S end at Property on W (right) side of road.

From US #1: At S end of Fort Pierce take Midway Road W approx .6 mile to Sunrise Blvd; turn & go 1 Block S to W 1st Street; turn R and follow to corner at end; turn L onto Palmetto Ave and follow road to S end at Property on W (right) side of road.

**The property is fenced & locked.
Please contact our office for
a viewing appointment.**



Looking south at the wide river view of this pristine waterway.

