

# 12.3ac Ag Land

## 2 Platted 6.17ac Lots Selling Together

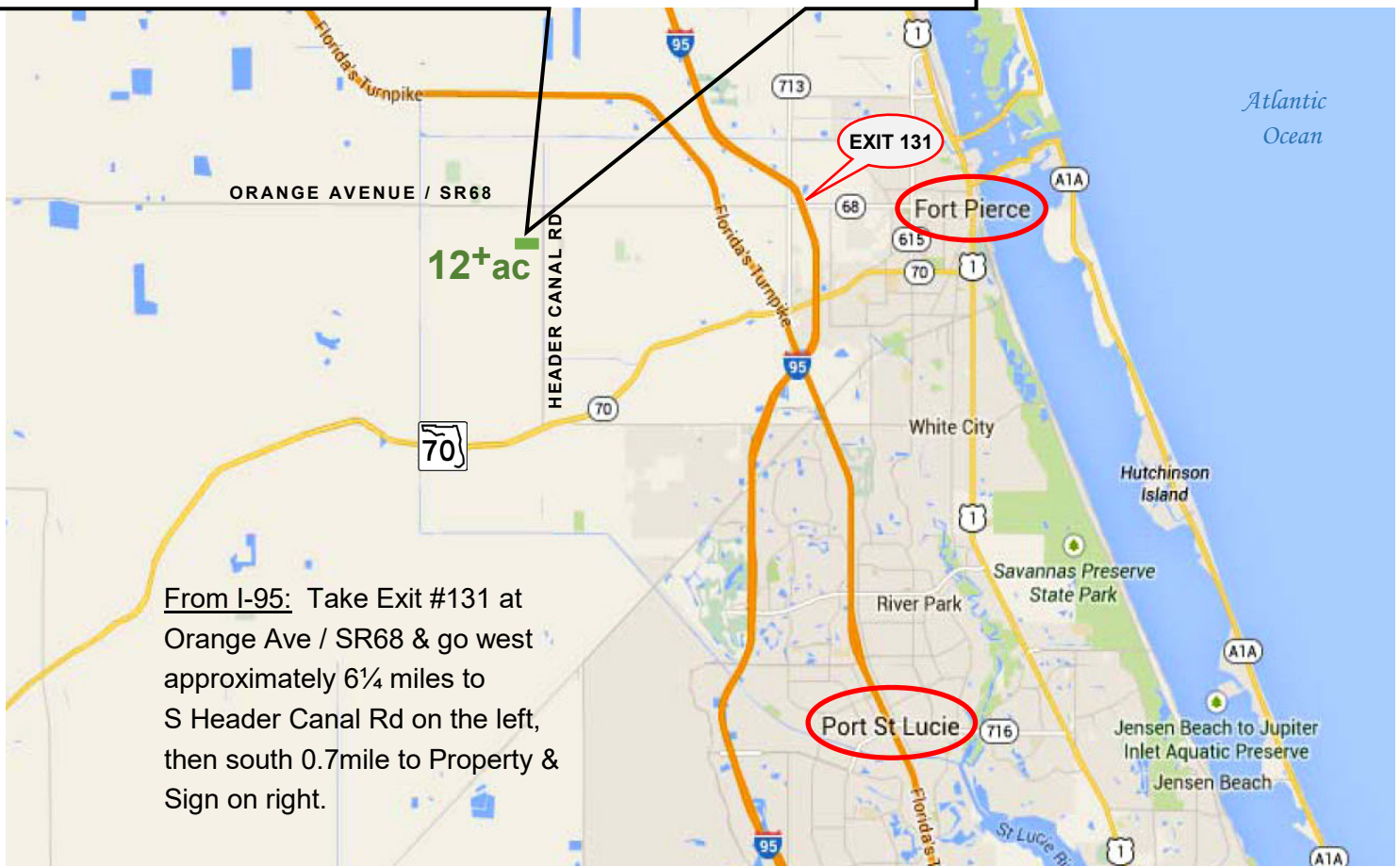
South Header Canal Rd, Saint Lucie County, FL 34945



- AG-5 Agricultural Zoning
- Ag Exempt Taxes
- Laser Levelled & Fenced
- Irrigation & Water Control
- Currently a Bamboo Farm

**NO Property Owners' Association or Fees**

**\$600,000.**

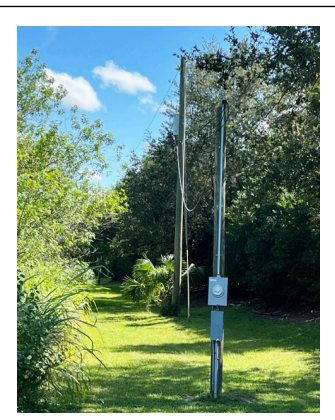


**mark walters & company**  
real estate brokers & auctioneers

[www.waltersco.com](http://www.waltersco.com) • email: [mark@waltersco.com](mailto:mark@waltersco.com)  
531 South US Hwy 1, Suite B • Fort Pierce, FL 34950  
Office (772) 468-8306 • Cell (772) 201-5650



- Micro-jet Irrigation System with 4" PVC Underground Main Lines
- Sub-Surface Drainage: 4" Plastic Perforated Drain Lines; Outfall to Header Canal
- Artesian Well with 125 Amp Service to 5hp Irrigation Pump
- Gated Entrance from Paved Road, Fully Field Fenced Perimeter
- 30' Ingress/Egress Easement to Pineapple Lane at Southwest Corner
- SL County PIDs: 2214-501-0001-000-8 & 2214-501-0002-000-5



The information in this brochure, while believed to be accurate, is subject to verification by prospective purchasers and no liability for errors or omissions is assumed by Mark Walters & Company, its Broker or any of its Agents.