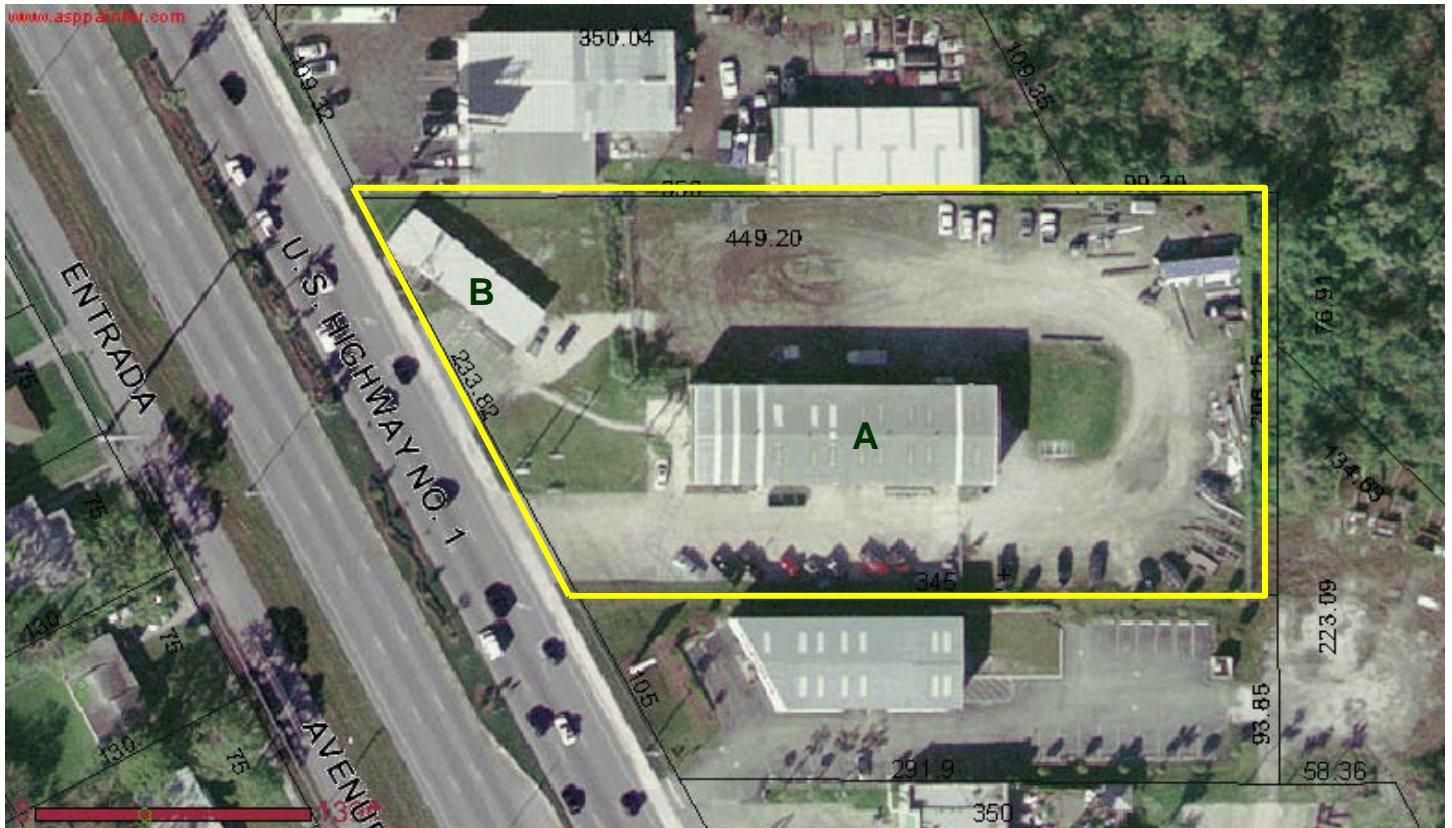


U.S. 1 Commercial Bldgs. • Port St. Lucie, FL
2,100sf & 7,500sf on 1.89ac
7320 & 7330 South U.S. 1
\$2,200,000.



Offering Land & Buildings ONLY

- 234 ft US 1 Frontage
- 3/4 mile North of Prima Vista



**7,500 sf Steel Bldg • 50' x 150' • 20 ft wall height
3,000 sf 2-story office/showroom**



2,100sf • 20'x 85' office • 20'x 20' garage



**Front Entrance
and Lobby area**



Bldg A Office Complex



**Please Call
our Office for
Additional Details**